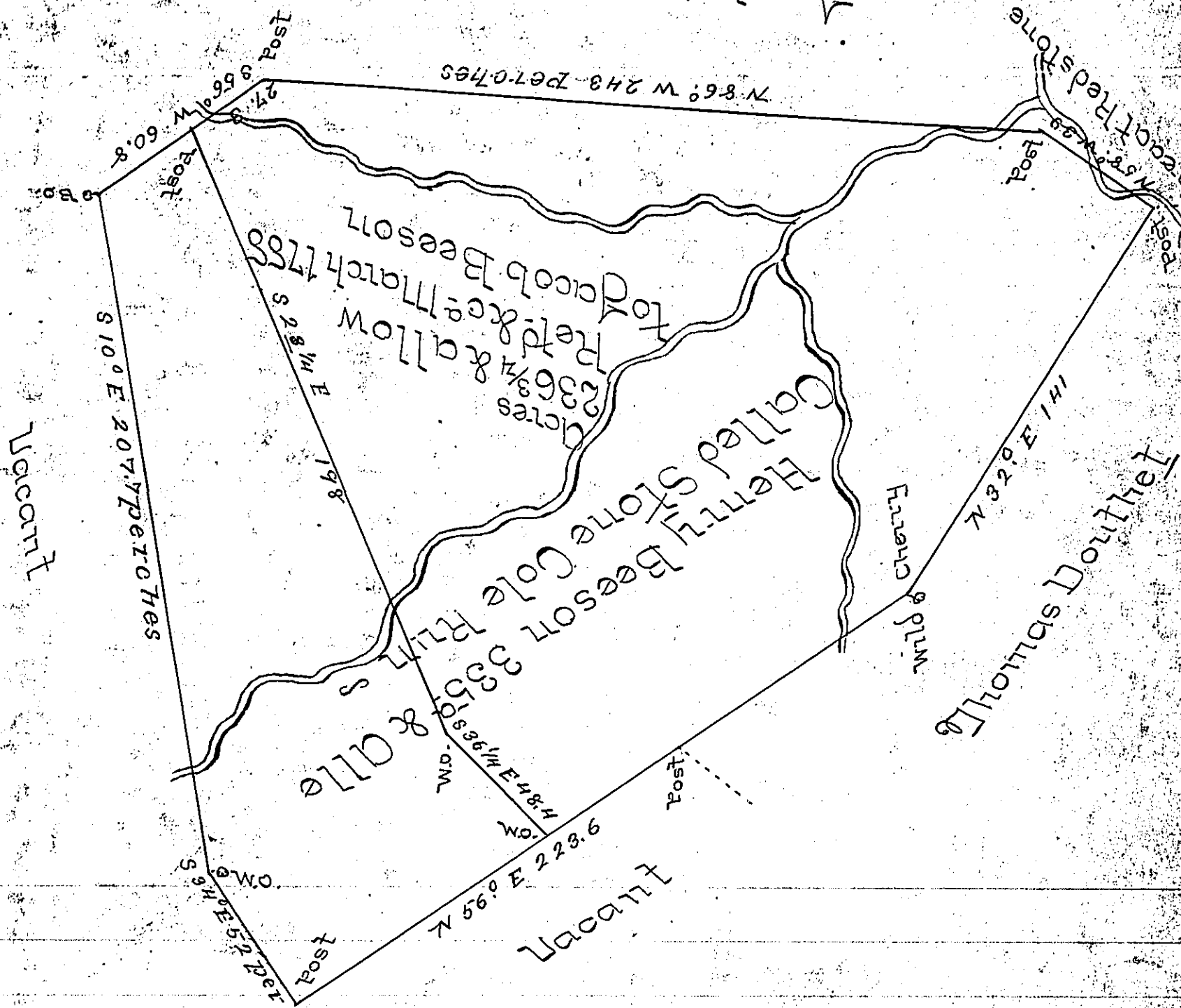


Assabella the Cleary



Situated on the Waters of Great Redstone Cumberland County
 the New Purchase And Surveyed September 27th 1767
 By Order of Survey No 3455 dated the 14th day of June
 1769 ~ ~

By *Alane Dyse*

To John Lukens Esq^r
 Surveyor General

IN TESTIMONY that the above is a copy of the original remaining on file in
 the Department of Internal Affairs of Pennsylvania, made
 conformably to an Act of Assembly approved the 16th day of
 February, 1833, I have hereunto set my Hand and caused
 the Seal of said Department to be affixed at Harrisburg,
 this sixth day of June 1899.

James W. Patton
 Secretary of Internal Affairs.

